



GAT MONTHLY MEMBERSHIP PROGRESS REPORT

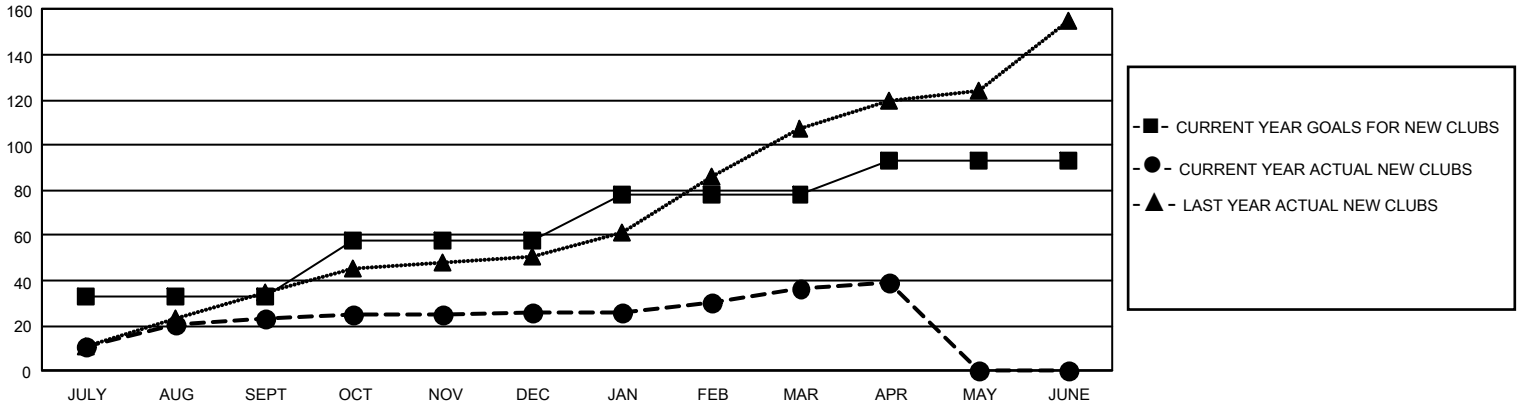
Results as of: 4/30/2023

GMT Constitutional Area 6, Group K

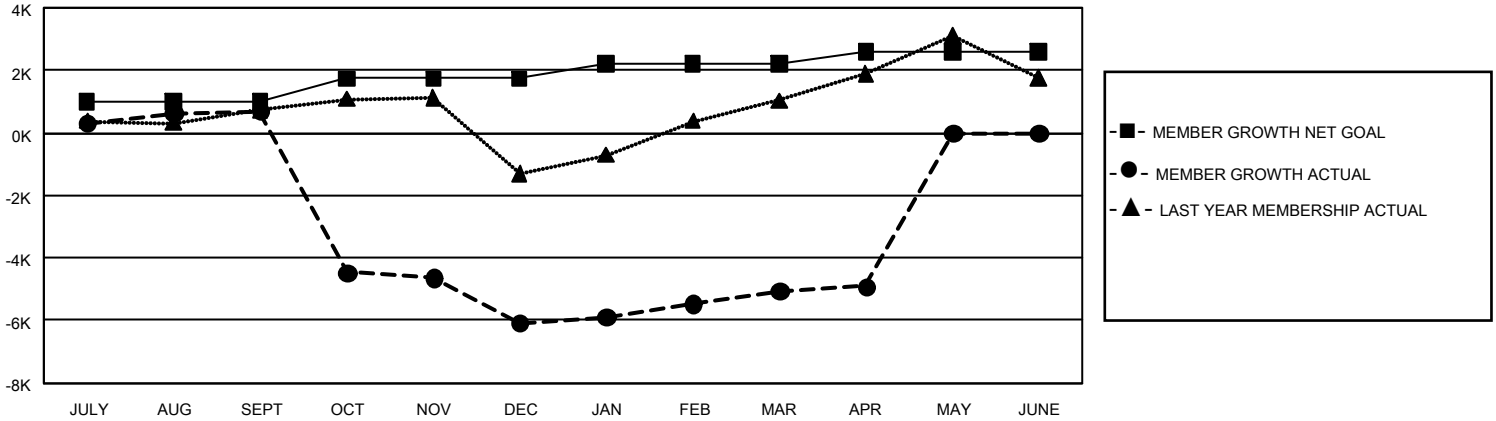
REPORT DOES NOT INCLUDE CLUBS IN UNDISTRICTED AREAS.

Clubs				Members			
RESULTS FOR 2022-2023				RESULTS FOR 2022-2023			
QUARTER	NEW CLUB GOAL	NEW CLUBS	DROPPED CLUBS	QUARTER	MEMBER GROWTH NET GOAL	MEMBER GROWTH ACTUAL	DROPPED MEMBERS ACTUAL (including transfers)
JULY/AUG/SEPT	99	23	14	JULY/AUG/SEPT	985	2,022	1,095
OCT/NOV/DEC	75	3	304	OCT/NOV/DEC	750	715	7,431
JAN/FEB/MAR	60	11	13	JAN/FEB/MAR	470	1,750	408
APR/MAY/JUNE	45	2	1	APR/MAY/JUNE	380	480	241

GOALS AND ACTUAL NEW CLUBS CUMULATIVE



GOALS AND ACTUAL MEMBERS CUMULATIVE



DROPPED CLUBS: 332	674 CLUBS OF 1,523 ADDED 1 OR MORE NEW MEMBERS	GENDER DISTRIBUTION	
		MALE 25,491 (65.11%) FEMALE 13,644 (34.85%) NON BINARY 1 (0.00%) PREFER NOT TO ANSWER 16 (0.04%)	
DROPPED MEMBERS		CLICK HERE FOR CUMULATIVE MEMBERSHIP DATA	
DECEASED 68 CLUB CANCELLED 6,504 OTHER 2,602 TOTAL 9,174	TOTAL FAMILY UNIT MEMBERS 21,969 FAMILY MEMBERS PAYING HALF DUES 12,824		